



# Aeon Metals Limited

ABN 91 121 964 725

Suite 32, 88 Pitt St, Sydney NSW 2000, Australia  
PO Box 8155, GCMC Qld 9726, Australia  
P: 61 7 5574 3830 F: 61 7 5574 3568  
E: [info@aeonmetals.com.au](mailto:info@aeonmetals.com.au)

ASX Code - AML

10 October 2016.

Market Announcements Office  
Australian Securities Exchange  
Level 4, Exchange Centre  
20 Bridge Street  
Sydney NSW 2000

## High grade copper in shallow holes at Walford Creek

The Company advises that the drilling of shallow, along strike diamond holes as announced on 31 August 2016 has been completed at Walford. The program consisted of 8 diamond drill holes for 586 m. All holes have been drilled at 60 degrees towards the north. Locations of these holes are shown on Figure 2.

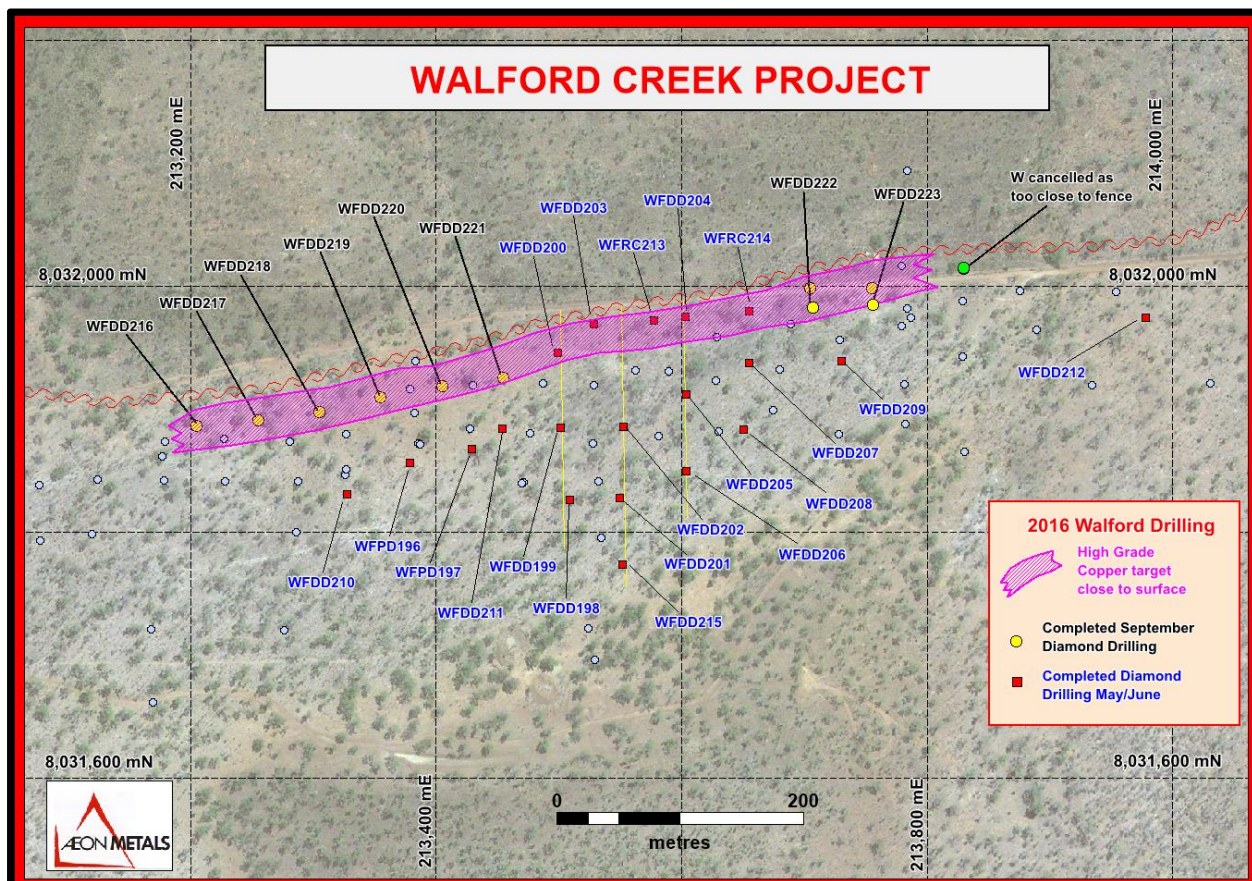
Visual geological logging of the core indicates that the high grade copper intersected previously in shallow holes WFDD200, WFDD203 and WFDD204 (see the Company's announcements of 16 and 30 August and 14 September) extends both to the east and west at shallow depths close to the fault. Copper mineralisation in these holes exists as both chalcopyrite, chalcocite and native copper. Figure 1 shows native copper in hole WFDD221 and Figure 3 shows semi-massive chalcopyrite in hole WFDD223.

The continuity of both the geology and the high grade copper mineralisation intersected in earlier drilling appears now to extend several hundred metres further, based only on visual estimates of copper grades. This will be confirmed through assaying of the core. The core is currently being transported back to Mount Isa where specific gravity measurements will be taken prior to core cutting and then despatch to the laboratory. Previous above grade results in the past drilling have necessitated slower digest times in the assay laboratory and it is now expected that assay results are not likely until early to mid-November from this current drill program.



**Figure 1: WFDD221 Native copper from 54.8m downhole. Core photographed is HQ diameter and 12cm long.**





**Figure 2:** Map shows the holes completed in September and those completed earlier in the year.



**Figure 3:** WFDD223 showing semi massive chalcopyrite at 75.5m downhole. This hole was the last and eastern most hole of the September drill program. Core photographed is HQ diameter and 10cm long.

For more information, please contact:

Hamish Collins  
Managing Director

[info@aeonmetals.com.au](mailto:info@aeonmetals.com.au)  
[www.aeonmetals.com.au](http://www.aeonmetals.com.au)



## **APPENDIX 1 – COMPETENT PERSONS**

*The information in this report that relates to Aeon Metals Limited's exploration results is based on information compiled by Mr Dan Johnson who is a Member of the Australian Institute of Geoscientists and who has sufficient experience relevant to the style of mineralisation and type of deposit under consideration and to the activity which he is undertaking to qualify as a Competent Person as defined in the 2012 Edition of the Australasian Code for Reporting of Exploration Results, Mineral Resources and Ore Reserves (the "JORC Code"). Mr Dan Johnson is a full-time employee of Aeon Metals Limited and consents to the inclusion in the presentation of the exploration results in the form and context in which they appear.*